

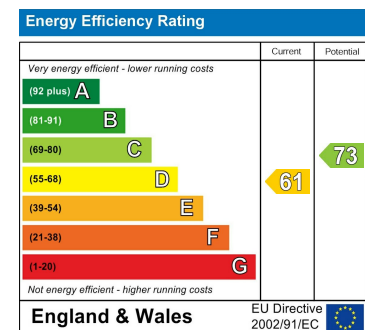
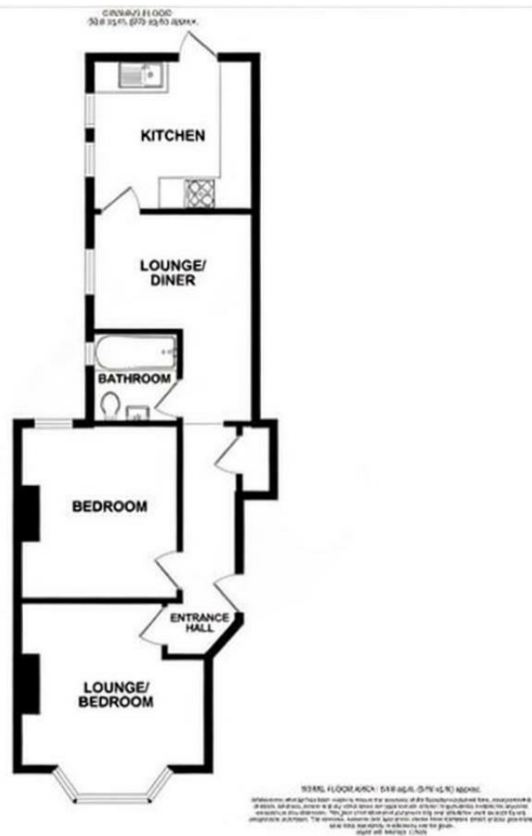
PRINCES STREET

SOUTHEND-ON-SEA, SS1 1PT

GUIDE PRICE £165,000
LEASEHOLD

* £165,000 - £185,000 * NEW LEASE ON COMPLETION - NO ONWARD CHAIN - TWO DOUBLE BEDROOM GROUND-FLOOR FLAT IN CENTRAL SOUTHEND-ON-SEA, BENEFITTING FROM DIRECT ACCESS TO A COURTYARD GARDEN. BOASTING A STYLISH KITCHEN AND BATHROOM. IN NEED OF SOME REMEDIAL IMPROVEMENT.

RP&C.
RICKY, PLANT & CHEN-PORTER



Agents Note: Whilst every care has been taken to prepare these particulars, they are for guidance purposes only. All measurements are approximate and are for general guidance purposes only and whilst every care has been taken to ensure their accuracy, they should not be relied upon and potential buyers/tenants are advised to recheck the measurements

RP & C Estate Agents
15 Nelson Street
Southend On Sea
SS1 1EF

01702 844984
info@rpcestateagents.co.uk
www.rpcestateagents.co.uk

RP & C.
RICKY, PLANT & CHEN-PORTER